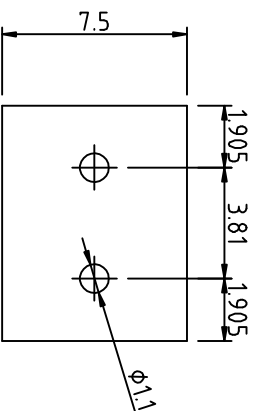
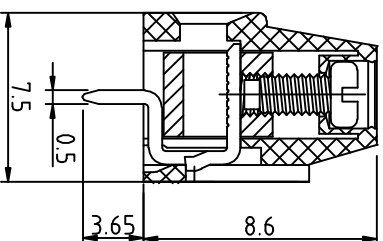


N=Number of contacts




P.C.B. LAYOUT

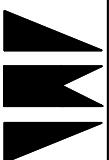
| SIGN | DATE | DESCRIPTION | APPROVER |
|----------|------|-------------|----------|
| Δ | | | Shi Jun |
| Δ | | | |
| Δ | | | |

Technical Data:

Material:

- Δ Contact(metal housing): Zinc Die Casting or Brass Machined(option)
 - Δ Terminal screw: Steel galvanized and chromateize or Nickel plated or Tin plated (standard) (option)
 - Δ Solder Pin: Brass with Tin plated
 - Δ Insulating body(housing): Polyamide(Glass filled)(UL94V-0)
- Electrical
- \bullet Voltage rating: 300VAC
 - \bullet Current rating: 15 Amps/way max
 - \bullet Contact resistance: 20m Ω (max)
 - \bullet Insulation resistance: 5000M Ω /1000V
 - \bullet Withstanding Voltage: 2000VAC(1min) Test time=60sec/1pcs
 - \bullet Wire range: 16-24AWG
- Mechanical:
- \bullet Torque: 4kgf.cm/M2.5
 - \bullet Operating Temperature: -33°C to +120°C
 - \bullet Soldering reliability:
 - Test temperature= 250°C \pm 10°C
 - 5 seconds max
- Safety approval deta: 

| POLE | 2P | |
|------|-------------|------|
| A | NX3.81 | 7.62 |
| B | (N-1) X3.81 | 3.81 |



杰科电子有限公司
JIE KE ELECTRONICS CO., LTD.

PART NAME: JK125-381 2P

TITLE:

PART NO.:

DWG NAME:

APPROVED BY

CHECKED BY

DESIGNED BY

DRAWN BY

CUSTOM NO.:

Tolerance

岑杰

孙学峰

杨丽霞

杨丽霞

UNITS: mm
SCALE: 4/1
REVISION: B2

x. \pm 0.50
xx \pm 0.30
xxx \pm 0.10
xxx \pm 1°

A

2

3

4

5

6

7

A

B

C

D

E

1

2

3

4

5

6

7